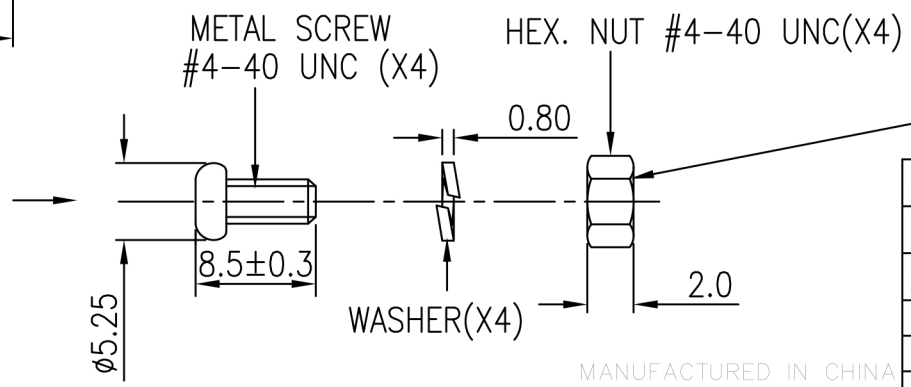
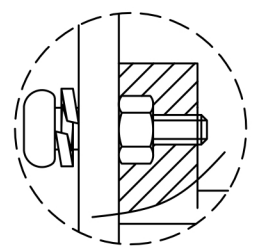
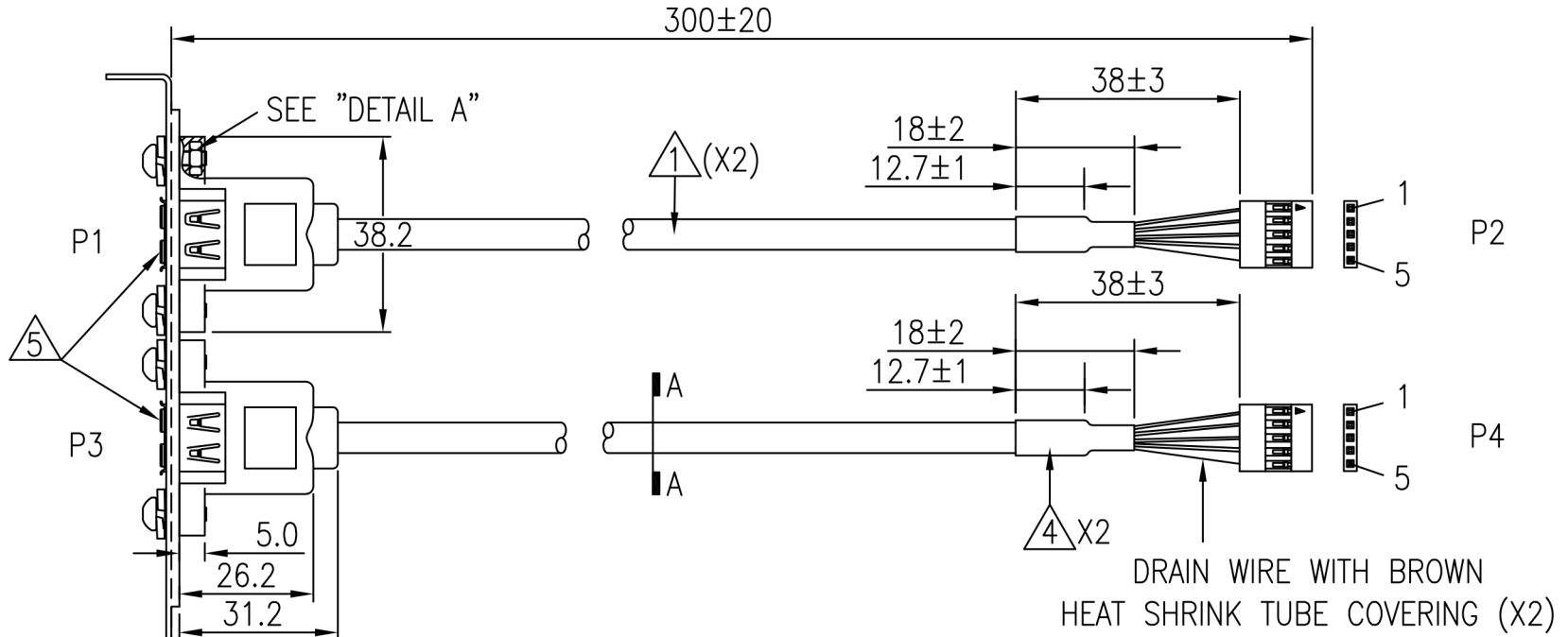
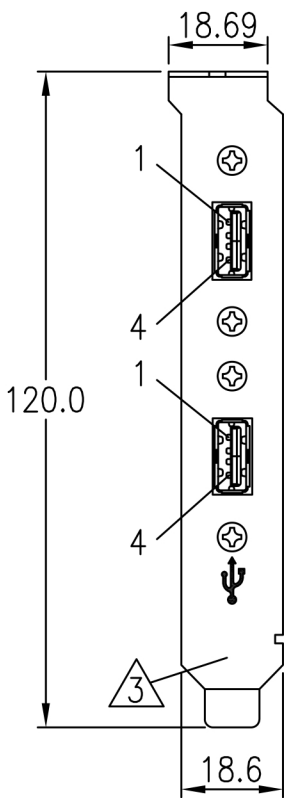


REV.	ECO NO.	DATE
E	20061991	10-10-2006
F	20092822	10-26-2009



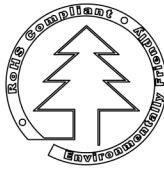
ADD GLUE IN HEX.NUT BEFORE ASSEMBLY

DRAWING APPROVED  
 SAMPLE APPROVED PER DRAWING SPECIFICATIONS  
 PROPRIETARY & CONFIDENTIAL. THE INFORMATION CONTAINED IN THIS DRAWING IS THE SOLE PROPERTY OF CABLES TO GO. ANY REPRODUCTION IN PART OR AS A WHOLE WITHOUT THE WRITTEN PERMISSION OF CABLES TO GO IS PROHIBITED.

**Wally Cain**

Digitally signed by Wally Cain  
 DN: cn=Wally Cain, c=US, o=Lasta  
 OU=Product Management  
 Reason: I am approving this document  
 Date: 2009.11.03 10:31:36 -05'00'

MANUFACTURED IN CHINA



<input type="checkbox"/> O	
<input checked="" type="checkbox"/> S	
REV. F	CUS. REV B

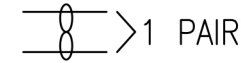
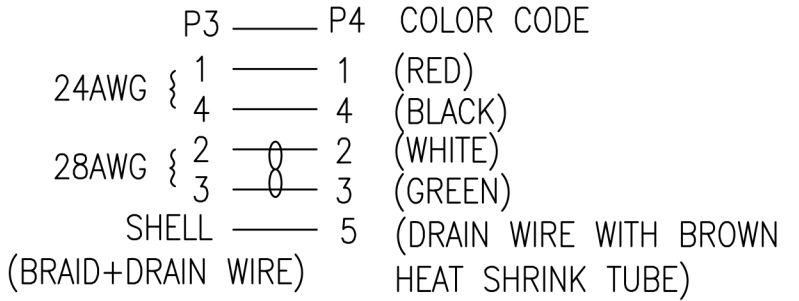
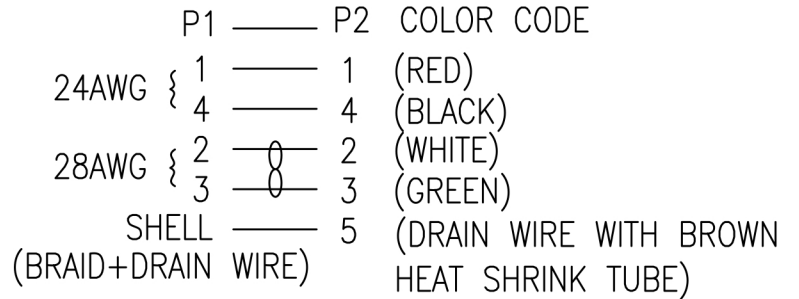
mm	TITLE
NONE	USB 2.0 Internal AT Motherboard Adapter-2 Port -12 Inch
1/4	CUS. NAME
DIMENSIONAL TOLERANCES UNLESS OTHERWISE NOTED	
.X ± 0.2	.XX ± 0.10
.XXX ±	ANGLES ±
Part No: 4444	CUS. P/N

<b>Show Me</b>	
CABLES	
an INFINIT® brand	
ENG. Togo	DATE 10-30-2009
CHECKED Sean	DATE 10-30-2009
APPROVED Jeffrey	DATE 10-30-2009

NOTES:

1. UL2725+CL2 CABLE: SEE SEC A-A.
2. CONNECTOR: P1 & P3 : USB A TYPE FEMALE, SOLDER TYPE WHITE PBT INSULATION, GOLD 5μ" PLATED CONTACTS, TIN PLATED SHELL.  
P2 & P4: 5PIN HOUSING: JWT/#A2541H02-5P.  
(TERMINAL: JWT/#A2541T3B-00)
3. STEEL BRACKET, NICKEL PLATED.
4. BLACK HEAT SHRINK TUBE.
5. USB A FEMALE CONNECTORS NEED TO BE MOVED FORWARD TO EXTEND THROUGH THE BACK PLANE HOLES ABOUT 1mm.
6. P1 & P3 HOOD: MOLDED BEIGE (CTG-401) PVC.
7. ADD MODERATE QUANTITY GLUE (LOCTITE/#220) IN EACH HEX.NET BEFORE ASSEMBLY CABLE.
8. TESTING: 100% ELECTRICAL TEST AT 10M OHM INSULATION RESISTANCE.
9. ALL MATERIALS ARE RoHS COMPLIANT.
10. PACKING: EACH CABLE IN A CABLES TO GO ZIP-LOCK POLYBAG (WITH RoHS MARKING).  
BAR CODE LABEL (WHITE BACKGROUND WITH BLACK LETTERS, SEE "DETAIL B") TO BE PASTED ON CABLES TO GO ZIP-LOCK POLY-BAG.
11. CABLE MARKING: PRINTING INCLUDE "E\*\*\*\*\* (UL) TYPE CL2 75°C 28AWG/1P+24AWG/2C AWM 2725 80°C 30V VW-1"ALONG ITS LENGTH.

PIN OUT



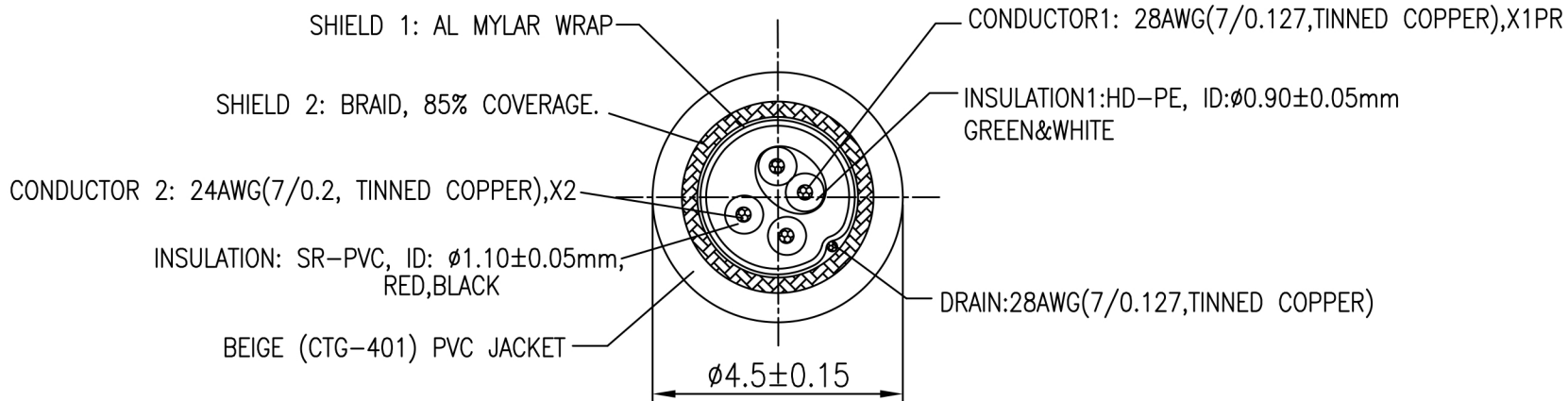
MANUFACTURED IN CHINA



O

S

DRAWING APPROVED _____		DATE: _____	
SAMPLE APPROVED PER _____		DATE: _____	
DRAWING SPECIFICATIONS			
PROPRIETARY & CONFIDENTIAL. THE INFORMATION CONTAINED IN THIS DRAWING IS THE SOLE PROPERTY OF CABLES TO GO. ANY REPRODUCTION IN PART OR AS A WHOLE WITHOUT THE WRITTEN PERMISSION OF CABLES TO GO IS PROHIBITED.			
	mm	TITLE	 an INFINIT® brand
SCALE	NONE	USB 2.0 Internal AT Motherboard Adapter-2 Port -12 Inch	
SHEET	2/4	CUS. NAME	
DIMENSIONAL TOLERANCES UNLESS OTHERWISE NOTED		CUS. P/N	ENG. Togo DATE 10-30-2009
.X ±	0.2	.XX ±	0.10
.XXX ±	ANGLES ±	Part No: 4444	CHECKED Sean DATE 10-30-2009
REV. F	CUS. REV B		APPROVED Jeffrey DATE 10-30-2009



SEC A-A  
SCALE:NTS

**CTG #13403**  
2-PORT INTERNAL 5-PIN  
MOTHERBOARD ADAPTER

7 57120 13403 \*

CODE UPC-A  
"\*" CHECK DIGIT

DETAIL B

MANUFACTURED IN CHINA



O  
 S

DRAWING APPROVED _____		DATE: _____	
SAMPLE APPROVED PER _____		DATE: _____	
DRAWING SPECIFICATIONS			
PROPRIETARY & CONFIDENTIAL. THE INFORMATION CONTAINED IN THIS DRAWING IS THE SOLE PROPERTY OF CABLES TO GO. ANY REPRODUCTION IN PART OR AS A WHOLE WITHOUT THE WRITTEN PERMISSION OF CABLES TO GO IS PROHIBITED.			
	mm	TITLE	 an INFINITI® brand
SCALE	NONE	USB 2.0 Internal AT Motherboard Adapter-2 Port -12 Inch	
SHEET	3/4	CUS. NAME	
DIMENSIONAL TOLERANCES UNLESS OTHERWISE NOTED		CUS. P/N	ENG. Togo 10-30-2009
.X ±	0.2	.XX ±	0.10
.XXX ±	ANGLES ±	Part No: 4444	CHECKED Sean 10-30-2009
REV. F	CUS. REV B		APPROVED Jeffrey 10-30-2009